



Gas Chromatograph
Nexis GC-2030

The Next Industry Standard
Nexis GC-2030, Shimadzu's premier gas chromatograph, offers a modern approach to a classic chromatographic technique. Designed with the user in mind, new innovative features, exceptional performance and high-throughput capabilities will elevate your lab to the next level.

LC Systems
i-Series Plus

i-Series Plus incorporates the technology developed for the Prominence (LC-20A) series, and provides a high level of basic performance with improved ease-of-use. The column oven comes with a larger adjustable temperature range, allowing high-temperature analysis to be performed with ease, while all i-Series Plus models include the automated pretreatment function as standard for sample dilution and co-injection with internal standard substances. i-Series Plus will not only improve analysis throughput, but will also automate human work for improved operational efficiency.



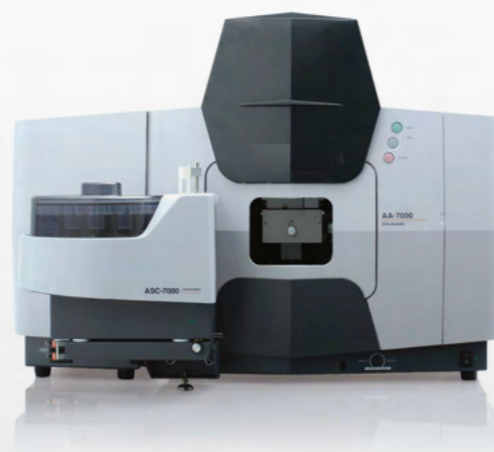
Ultra High Performance Liquid Chromatograph
Nexera series

The Nexera X3 model is the new flagship model for Shimadzu high-performance liquid chromatographs. Shimadzu changed the high performance and ultra-high performance LC system lineups to integrate the systems as the Nexera series. Overall efficiency depends not only on the performance of one instrument, but on the management of all devices within a lab. This realization leads to a time in which AI capabilities have been incorporated to allow devices to detect and resolve issues automatically. In addition, lab management has been integrated using the Internet of Things (IoT) and device networking, making it simple to review the status of instruments and optimize resource allocation. The Nexera series is a family of UHPLC systems that marries these AI and IoT enhancements to set new industry standards in terms of intelligence, efficiency, and design.



Atomic Absorption Spectrophotometers
AA-7000 Series

The AA-7000 Series incorporates newly developed 3D double-beam optics. The optical system has been designed to produce its maximum performance for each measurement method through optimal adjustment of the light beam and light beam digital filter, and by using optical components that restrict light losses.



Fourier Transform Infrared Spectrophotometer

IRSpirit

High Reliability Due to Humidity-Resistant Design

The robust optics are designed to ensure the system can be used reliably even under harsh temperature and humidity conditions.

- Optics sealed in an aluminum die cast body.
- Status monitor function features electrical and paper-based indicators.
- Beam splitter includes a humidity-resistant coating.
- Select from a KBr window (to 70% RH) or a KRS-5 window (to 90% RH).



UV-VIS Spectrophotometers
UV-1900i

The UV-1900i on-screen user interface includes large, easy-to-see icons deployed on a black background, so the instrument settings are evident at a glance. The control panel is ergonomically designed and positioned at the optimum viewing angle for the user. In quantitation mode on the UV-1900i, the stages of the entire measurement process and the current status are always shown on the display. As a result, users know immediately what to do in the next step. Spectra can be acquired as fast as 29,000 nm/min.

Total Organic Carbon Analyzer

TOC-L

The most important feature of a TOC analyzer is its ability to efficiently oxidize not only easily decomposed, low molecular weight organic compounds, but also hard-to-decompose insoluble and macromolecular organic compounds. The 680 °C combustion catalytic oxidation method, developed by Shimadzu and now used worldwide, can efficiently analyze all organic compounds.



Spectrofluorophotometer

RF-6000

By combining new technologies with those cultivated over Shimadzu's long history, the Shimadzu spectrofluorophotometer has been reborn as the RF-6000. Combined with LabSolutions RF software, designed for unrivaled measurement accuracy and easy operation, the RF-6000 offers the ultimate performance for a diverse range of customers' measurement needs.



Balance

Shimadzu introduced one-piece force cell technology commercially for precision balances in 1989. Today's UniBloc is created by high-precision wire electrical discharge machining applied to a block of aluminum alloy, and replaces the conventional electromagnetic balance sensor assembly.

UniBloc's compact, uniform structure ensures stable temperature characteristics, excellent response time and stable corner-load performance. The UniBloc design permits a consistency of production that assures reliability and a long operational life.

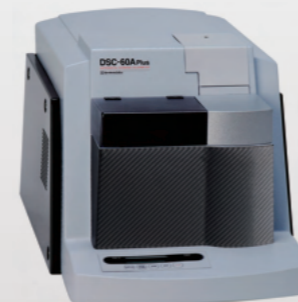
The updated UniBloc technology expands the UniBloc family balance lineup, which now ranges from semi-micro with a minimum display of 0.01 mg to precision platform balances up to 52 kg in capacity.



Differential Scanning Calorimeter

DSC-60 Plus Series

The DSC-60 Plus is an indispensable thermal analyzer for materials characterization in R&D and quality control applications in such areas as polymers, pharmaceuticals, electronic parts, foods, etc. It offers the sensitivity and easy operation required for the development of high-performance, highly functional new materials.



Sequential X-ray Fluorescence Spectrometer

XRF-1800



With spirit of a pioneer of local analysis, mapping and 4 kW thin-window X-ray tube, Shimadzu brush up these technologies with reviewing hardware and software, and achieve more reliable, more operative and more functional system. We are proud to introduce XRF-1800 system.



Energy Dispersive X-ray Fluorescence Spectrometer

EDX-7000/8000/8100

Shimadzu Corporation proudly announces the release of its new energy-dispersive X-ray fluorescence spectrometer series the EDX-7000 (Measurement range: 11Na to 92U) and EDX-8000 (Measurement range: 6C to 92U). Offering excellent sensitivity, resolution, and flexibility, they can be applied to a variety of industries and applications, from environmental assessments such as RoHS or ELV directives for the control of regulated materials to unique general-research analysis needs that require precise, high-sensitivity measurements.



X-ray Diffractometer

XRD-7000

Shimadzu XRD are designed with the concept "Provide solution to XRD analysis by ease of use and versatility". Basic system with high precision goniometer can be varied with optional items to adapt to the purpose. Please experience versatility based on firm technology.

Precision Universal Tester

Autograph AGS-X Series



Combining all necessary functions in a compact design, this high-performance, cost-efficient testing machine has been developed for low-capacity strength evaluations. Increase testing efficiency using dedicated data processing software (TRAPEZIUM LITE X).

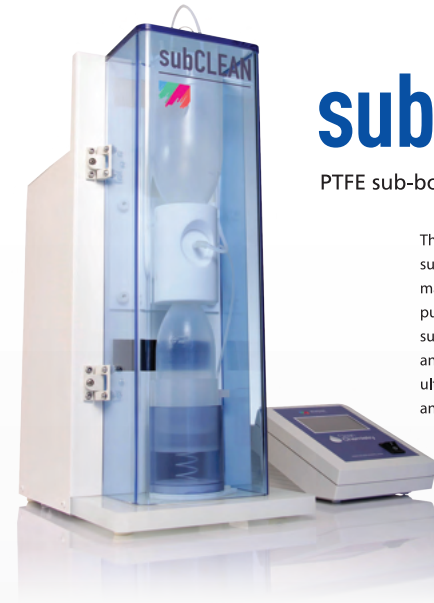


ETHOS UP

High Performance
Microwave Digestion System



The ETHOS UP is simply the most advanced yet easy to use system for microwave sample preparation we have ever manufactured. It offers a perfect integration between microwave hardware, user interface, digestion sensors and pressure vessels. The ETHOS UP fully embodies Milestone's philosophy in microwave sample preparation. Specifically designed for closed vessel microwave acid digestion, it offers productivity, safety, ease of use, connectivity, expertise and application flexibility.



subCLEAN

PTFE sub-boiling distillation system

The Milestone subCLEAN is a compact and easy-to-use sub-boiling system, where all parts in contact with acids are made of high-purity fluoropolymers. Offering an optimal purification method for preparation of high purity reagents, our subCLEAN system is therefore suitable for HF, as well as for HNO₃ and hydrochloric acid purification. Up to 90% cost saving of ultrapure acids, High productivity 'On-demand' acid purification and Re-purification of contaminated acids.

Wasserlab



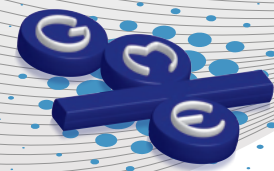
Water Purification System

Wasserlab designs and manufactures Water Purification Systems in order to satisfy laboratories, hospitals and industry demands for Ultra pure water (Type I water), Pure water (Type II water) and Osmotic water (Type III water). Our systems produce Pure water by means of a sequential process combination (filtering, reverse osmosis, resin deionization) in contrast to conventional distilled water.



Caliber's flagship product, CaliberLIMS has been part of critical pharma operations in laboratories all over the world, for over a decade. Stringent Quality by design, International standards adherence and trusted support have resulted in Caliber winning the confidence of multi-facility pharmaceutical companies across the globe. A vision towards integrated quality management and patronage by the several users, have encouraged Caliber to develop products such as CaliberQAMS, CaliberDMS and CaliberBRM with Single Sign-on Capability.

Caliber Product Suite is perfect combination of all that you need for your Laboratory to function several notches better. It has been put together to deliver higher ROI and greater compliance.



GME Limited

Solutions & Satisfaction

Corporate Office : GME House
House # 21, Road # 13, Block-G
Niketan, Gulshan-1, Dhaka-1212, Bangladesh
Tel: +880-2-985 4417, Fax: +880 (2) 985 4412
E-mail: info@gmegroup.net



Medi Graphic Trading Ltd.

Business Office : Mahmuda House
House # 28, Road # 8, Block # E, (2nd - 3rd Floor)
Niketan, Gulshan-1, Dhaka-1212, Bangladesh
Tel: +880-2-9857-020, Fax: +880-2-5881-0866
E-mail: info.mgt.analytical@gme-group.net

SHIMADZU

Excellence in Science



Liquid Chromatograph Mass Spectrometer

LCMS-8060

The LCMS-8060 is a ground breaking innovation in mass spectrometry helping to transform LC/MS/MS data quality by developing a new vision of sensitivity and speed. Shimadzu is the first mass spectrometry company in the world to deliver a triple quadrupole mass spectrometer with the highest sensitivity and ultra-fast technologies to create an innovation that really matters.

CHANGES EVERYTHING



Gas Chromatograph Mass Spectrometer

GCMS-TQ8050 NX

A new detector with better amplification performance maximizes the benefits of the OFF-AXIS Ion Optics, which offers both high ion transmission performance and outstanding noise elimination performance. These state-of-the-art technologies enable the system to reliably detect ultra-trace quantities of ions, down to the femtogram level, achieving the world's highest sensitivity levels. Also, the increased instrument robustness and safety provide dramatically improved reliability for ultra-trace analysis.



Inductively Coupled Plasma Mass Spectrometer

ICPMS-2030

The first system in the industry to include functions for assisting with analytical method development and diagnostics.

Newly developed collision cell and On-Line IEC work together to eliminate spectral interference, and achieve high-sensitive and low-interference analyses.

Unique system developed by Shimadzu results in the industry's lowest running costs.

